



High speed KVM over IP
management of computers

ADDERLink IP

Secure Internet or dial-up access to your computers or servers for 24/7 global control



PRODUCT IN BRIEF

High Speed KVM over IP . Designed jointly with Real VNC the ADDERLink IP provides multi platform remote access to computers and servers in data centers & remote offices. The ADDERLink IP is also ideal to connect to any analog KVM switch adding reliable KVM over IP functions. Providing remote Keyboard, Video and Mouse access via IP to your current KVM switch, the ADDERLink IP allows management of computers from anywhere in the world securely and remotely via the Internet, dial-up link or corporate network.

FEATURES

Independent operation

Gives full control even during boot up, BIOS level or computer crash states. The ADDERLink IP will work even if the controlled devices are not.

High video performance

The ADDERLink IP can use a standard web browser but for superior graphical performance RealVNC is used. Free of the limitations of HTTPS, Real VNC greatly enhances video performance.

Security

Employing enterprise grade security (using AES 128 bit encryption and RSA 2048 bit public key authentication) as standard, the ADDERLink IP is further enhanced by the use of Real VNC, allowing for the creation of ciphered user communications.

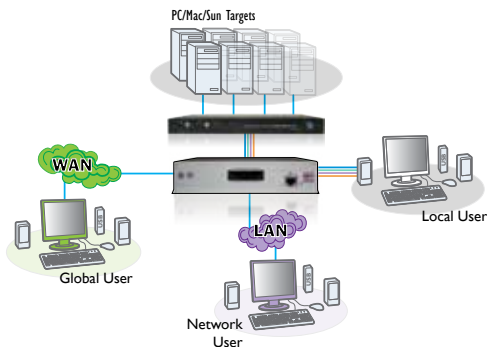
The ADDERLink IP doesn't need any software to be loaded on your servers and is easy to set up and use. The ADDERLink IP supports the RealVNC client software that, unlike HTTPS web browsers, is specifically designed for secure, high performance KVM via IP applications. The ADDERLink IP integrates with your existing KVM infrastructure for a cost effective global management tool.

User management

Knowing who does what and when is crucial for any remote access service. The ADDERLink IP can create up to 16 user profiles each defines user access rights. Each user's activity is recorded and time stamped. The resulting log can be exported for historical review.

Power control

When attached computers crash or require resetting often the only solution is to power them off and back on again. The ADDERLink IP allows for the integration of power switching devices that can be control through the user interface.



ADDERLink IP

Secure Internet or dial-up access to your computers or servers for 24/7 global control

ABOUT ADDER

Adder is a leading developer and thought leader in connectivity solutions. Adder's advanced range of KVM switches, extenders and IP solutions enable the control of local, remote and global IT systems across the enterprise. The company distributes its products in more than 60 countries through a network of distributors, resellers and OEMs. Adder has offices in the United States, United Kingdom, Germany, the Netherlands, Sweden, China and Singapore.

To find out more, visit:
<http://www.adder.com>

TECHNICAL SPECIFICATIONS

Video resolutions

Supports standard PC, Sun and Mac video modes up to resolutions of 1600x1200 with scalable viewer

Hardware compatibility

Supports PC, RS/6000, Alpha and SGI computers using PS/2 or Sun (USB and 8-pin styles) and Mac (USB) when using the appropriate CCUSB/CCSUN interface cables. Compatible with most KVM switches

O/S compatibility

All known software and operating systems including Windows (all), DOS, Linux, Unix, BSD, Sun OS, Solaris, Mac OS, NetWare etc.

ADDERLink IP to KVM/computer connection

Video: HDD15 Keyboard/Mouse: MiniDin6. 1m 3-in-1 cable supplied

Local console

Video: HDD15 Keyboard/Mouse: MiniDin6

Connections

Ethernet: RJ45 10/100 autosensing
Serial: 2 x DB9

Physical design

1U compact case, robust metal construction 198mm/7.92" (w), 44mm/1.76" (h), 120mm/4.8" (d), 0.75kg/1.65lbs 1 per 1U or 2 per 1U rack mount kits available

Power supply

100-240VAC, 50-60Hz

Operating temperature

0°C to 40°C / 32°F to 104°F

Approvals

CE, FCC

ORDERING INFORMATION

ADDERLink IP ALIP-XX

XX = Mains Lead Country Code:
UK = United Kingdom
US = United States
EURO = Europe
AUS = Australia

ADDITIONAL ACCESSORIES

RMK-4S: Single Rack Kit
RMK-4D: Dual Rack Kit

VKVM-XM: KVM cables (one set per connected computer)
(where X is the cable lengths in meters: 1, 2, 5 or 10)

CCUSB-XM: CCUSB converter (required to connect with computers that use a USB port to connect their keyboard and mouse)

CCSUN-XM: CCSUN converter (required to connect SUN computers that use a mini-DIN port to connect their keyboard and mouse)
(where X is the cable lengths in meters: 2, 5 or 10)

VSA3: PS/2 to AT -style keyboard converter
VSA1: PS/2 to 9-pin serial mouse converter

RELATED PRODUCTS

Adder offer a vast range of products to suit your needs. Other products you may be interested in include:

ADDERLink ipeps
AL-IPEPS



ADDERLink ipeps DA
AL-IPEPS- DA



ADDERLink IP GOLD
ALIP-GOLD



© Copyright 2011 Adder Technology Ltd. All brand names and trademarks are the property of their respective owners. LM-alip_v2.ID